



11th ITS EUROPEAN CONGRESS
DELIVERING FUTURE CITIES NOW

Glasgow, Scotland | 6-9 June 2016

PR04 - Progress in TN-ITS spatial data exchange

Tom Jensen – TomTom Maps



Organised by:  

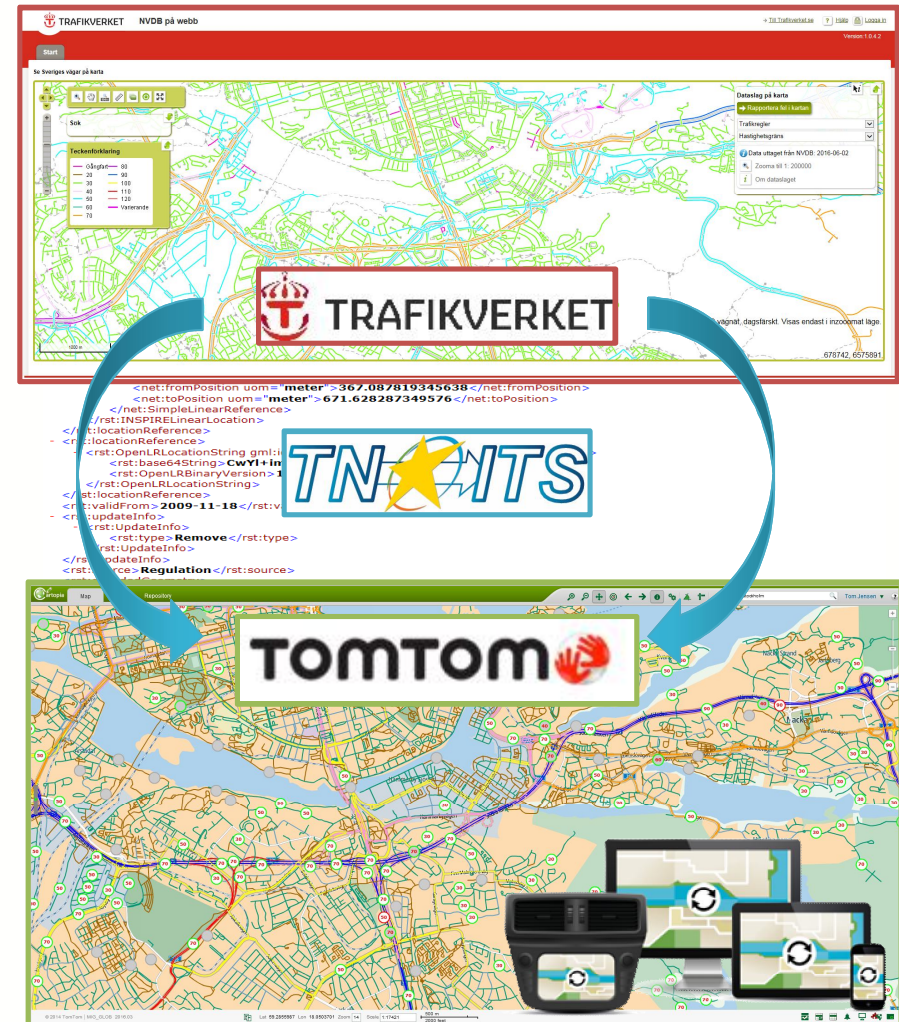
Hosted by:  

Supported by:     

PR04 - Progress in TN-ITS spatial data exchange



- European Union Location Framework – Transportation Pilot
- EU ITS Platform (EU EIP) project – Co-financed by the European Union
- Seamless datachain from Trafikverket Map to TomTom Map since 2013
- Daily XML Datafeeds
- Standardisation: TN-ITS and INSPIRE specification
- Data topics: Speed limit, Vehicle restriction, Road Name, Road Number, Maximum Height, Warning Sign



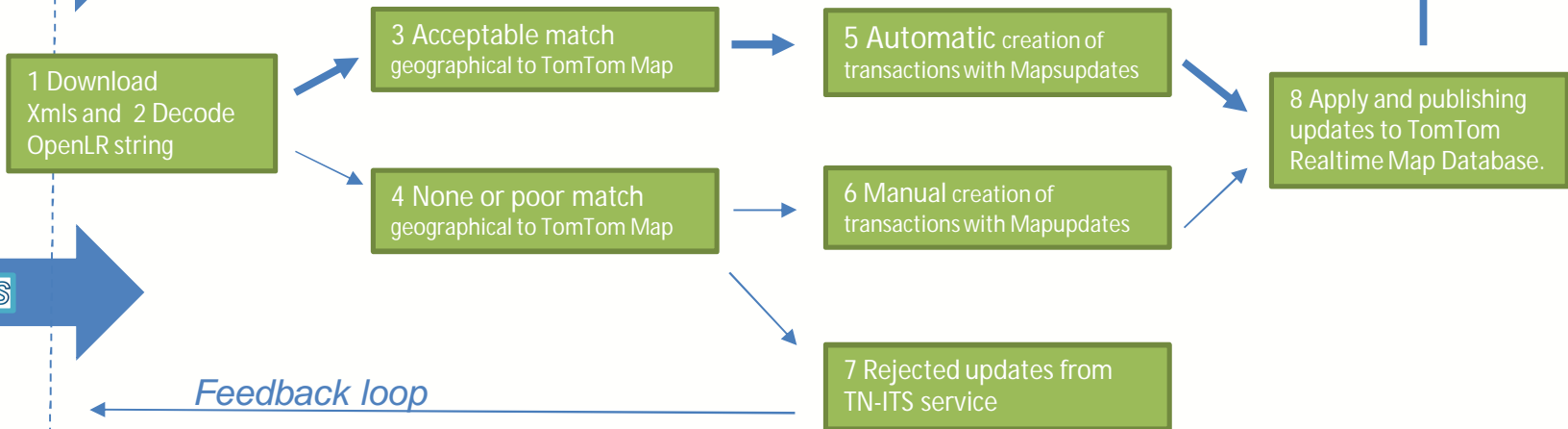
PR04 - Progress in TN-ITS spatial data exchange



Production steps to implement TN-ITS Map updates



DOWNLOAD -> DECODE -> UPDATE->PUBLISH



Example - Changes of speed-limit from 50 km/h to 40 km/h

Regulation source used for NVDB update May 26th:

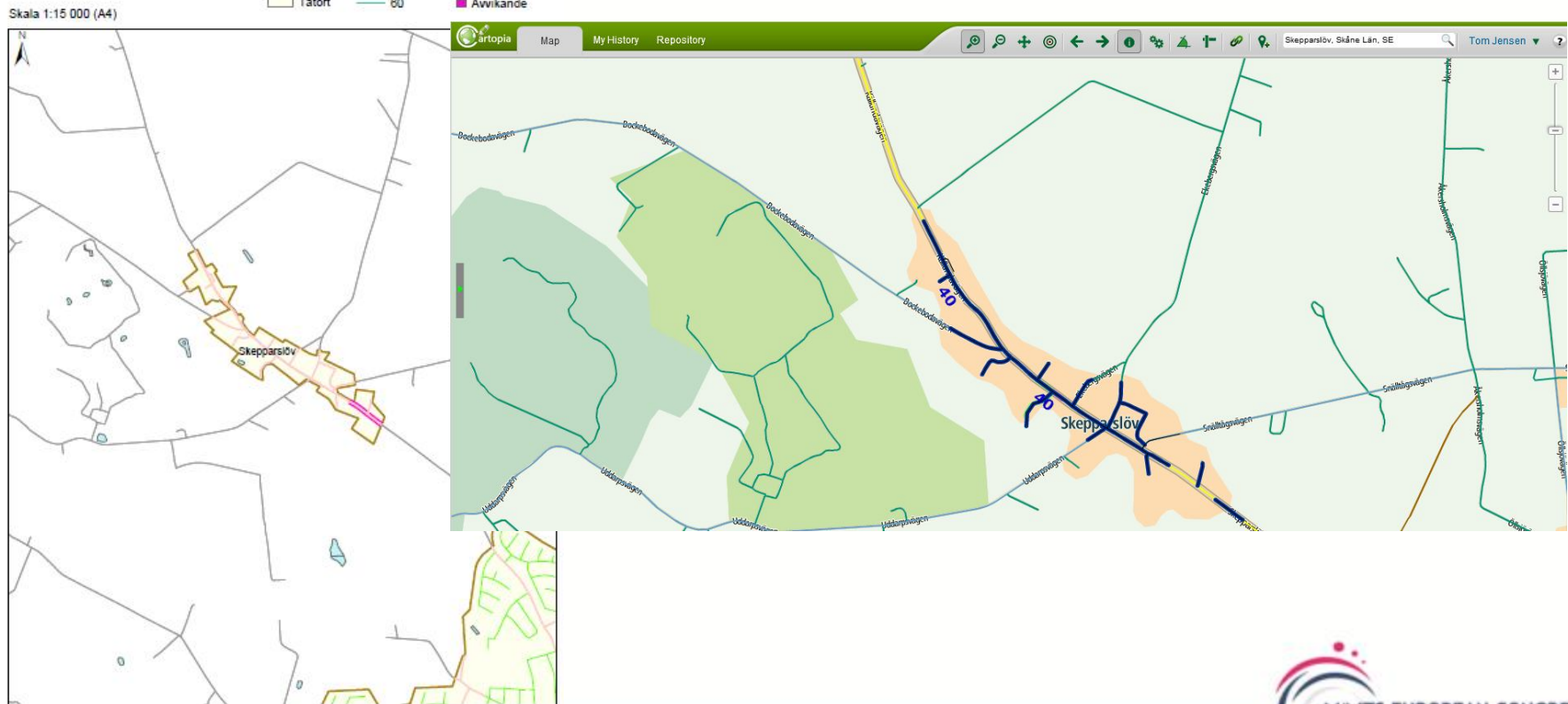
Kristianstads kommun
TÄTTBEBYGGT OMRÅDE- Skepparslöv

NY HASTIGHET

Gångfart	70
30	80
40	90
50	110
80	Awikande

□ Tätort

TN-ITS data on TomTom Map:



More than
100.000
updates
in 2015



More to come....

*Quote Trafikverket report:
...systematic adjustment of the speed limits of
the road traffic safety standards. It contains
proposals for action and includes the current
plan period 2014-2025*

© 2015 TomTom. All rights reserved.

PR04 - Progress in TN-ITS spatial data exchange

- Enables immediate updates from authorities to end-user devices.
Major timelines reduction = Move from quarterly to daily updates
- Better relationships with Public Roads Administration
- Proven technology standard - operational since 2013
- Opportunity of increasing Safety features coverage to all roads
(today mostly regional speed-limit coverage)
- Higher quality – based on knowledge from Swedish service:
*“whole Swedish network have since 2013,
before the implementation of the TN-ITS specifications,
and from 2015, after such an implementation,
significant reduced error rates from 25% to 7%”*
(based on quality test by field driving with competing navigation systems)

Thanks!

