

# SIS44 - Challenges on the data chain to serve automated driving



## TN-ITS

Stephen T'Siobbel  
President TN-ITS

Organised by:



Hosted by:



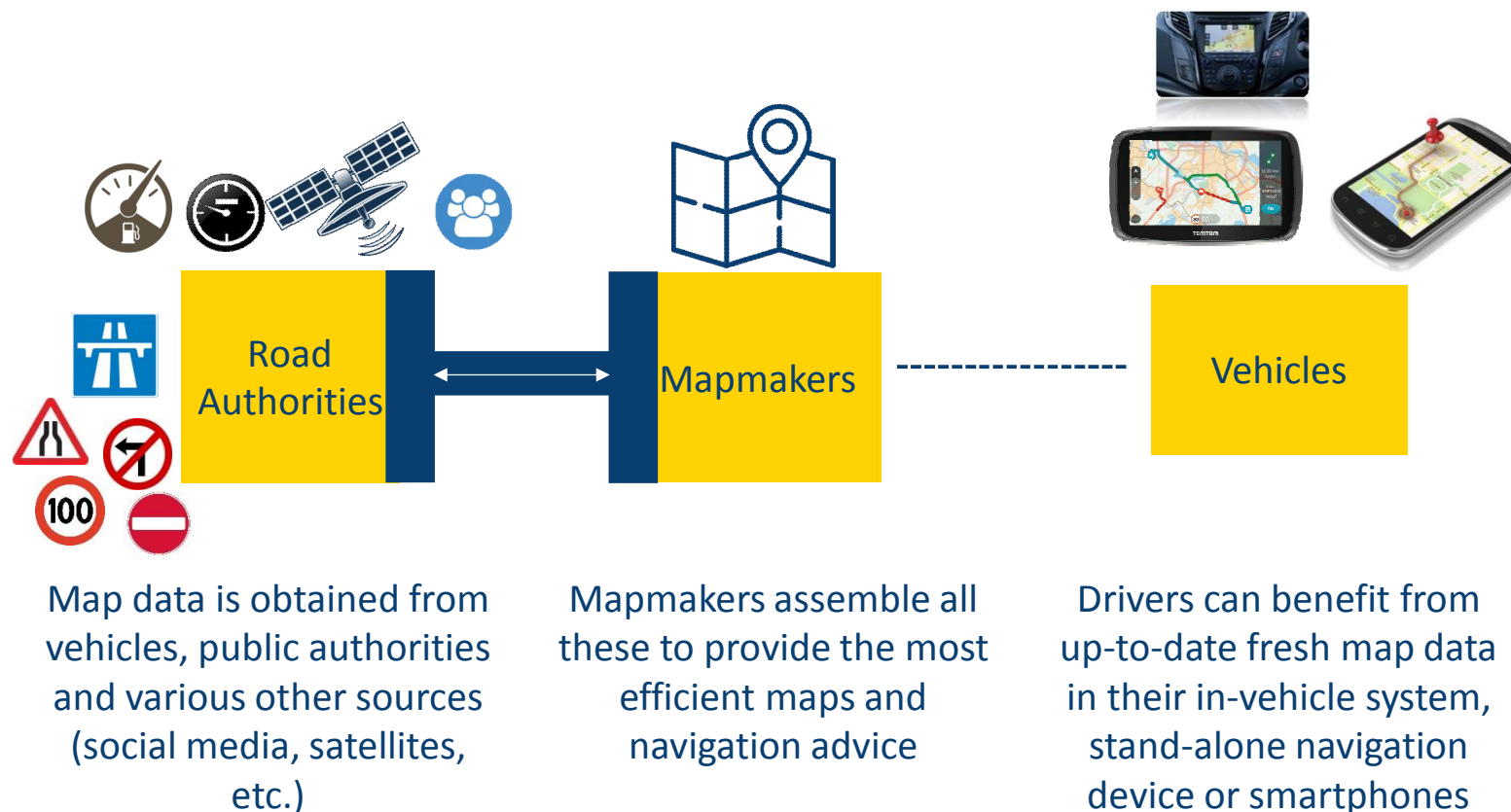
Supported by:



# Overview

- Context
- The TN-ITS Platform
- Status & latest results
- Outlook

# The data chain in a nutshell



# TN-ITS Storyboard

- EC Research Project 2010
- TN-ITS founded in 2013 – ERTICO Platform
- Transportation Pilot with JRC & EULF – operational services Norway, Sweden
- CEF Pilots (EIP A4.7) – 5 new pilots: Ireland, UK, Flanders, Finland, France
- CEN TC278 WG7 – bringing TN-ITS specifications to CEN-level

# TN-ITS How?

By bringing together  
relevant stakeholders

By supporting EC policy  
via the ITS and INSPIRE  
directives



→ to share effectively any changes to the static road data  
and ensure a seamless data chain

# TN-ITS Vision and Mission

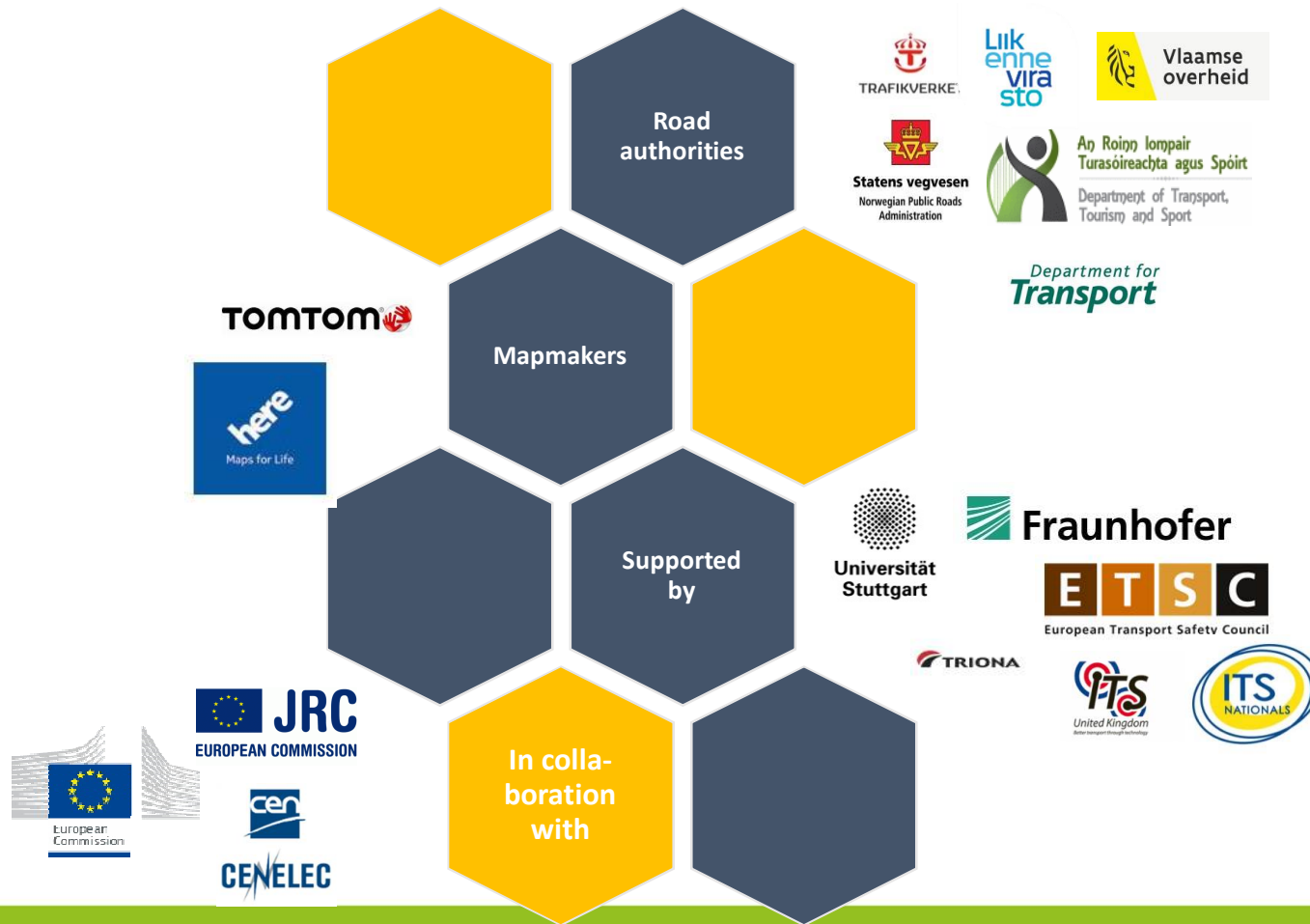
## Vision:

Bringing fresher map data to intelligent transport services

## Mission:

Facilitate and foster the exchange of ITS-related spatial road data between road authorities as trusted data providers and data users as map makers and other parties

# TN-ITS Members



# Focus: Specifications & Deployment



## Standardisation

Define & maintain TN-ITS specifications in CEN/TC 278 WG7



## Implementation

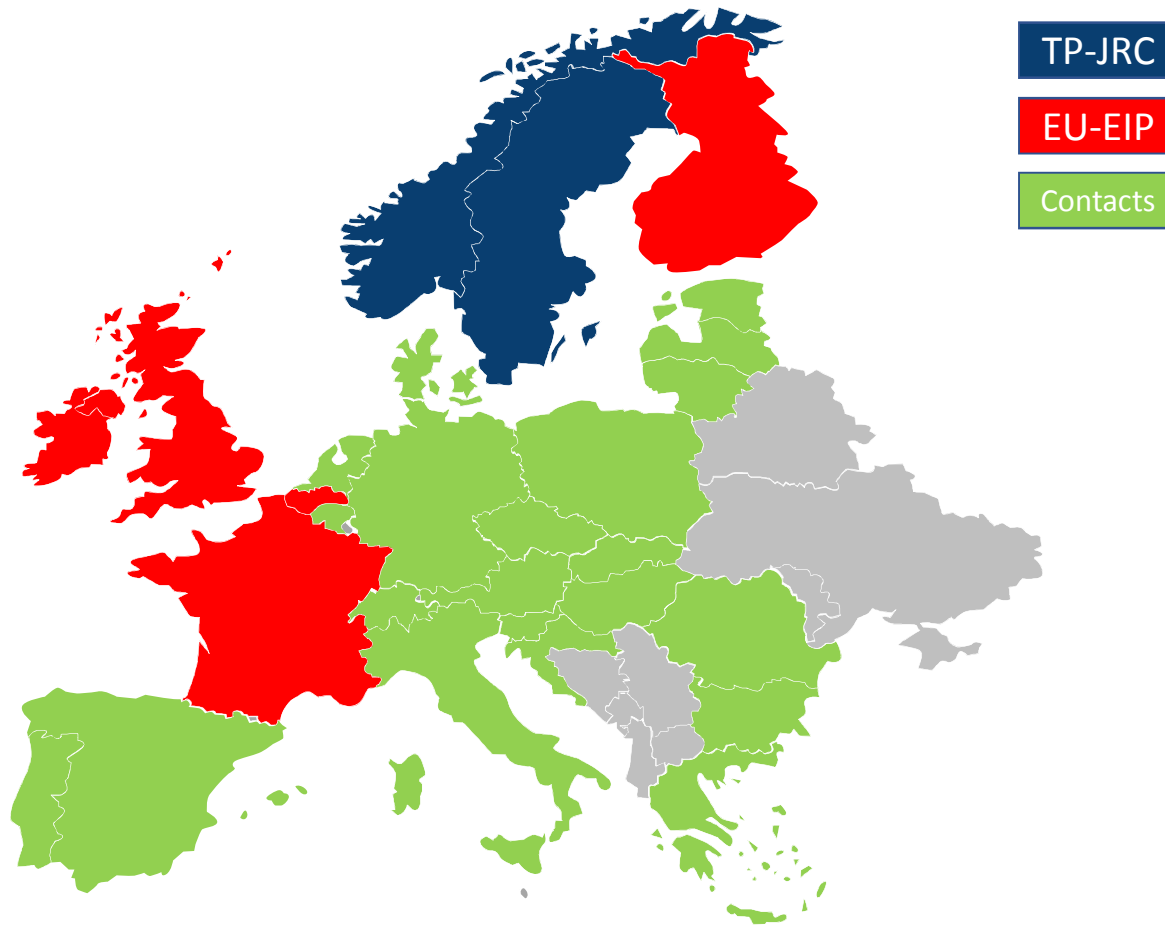
Provide guidelines, tools and services to support implementation in **Belgium, Finland, France, Ireland, Norway, Sweden, and United Kingdom.**

# TN-ITS Work Groups

Working groups:

- WG1 Location Referencing (TomTom)
  - WG2 Specifications & Standardisation (NPRA)
  - WG3 Implementation support (STA)
- 
- Work Groups => **Task Forces**

# TN-ITS Service Deployment



# TN-ITS Services overview

Country	Data Provider	Service status		Coverage of updates		Map Attributes/Features		Location	Update
		Launch	Level	Geography	Road network	Key attr.	Feat. types	Reference	Availability
Sweden	STA	2014	Operational	Full country	All roads	SL/Restrictions/RoadInfo	Linear & Point	OLR,GML,INSP	Daily
Norway	NPRA	2015	Operational	Full country	All roads	SL/Warning/Stop/ Restrictions/RoadInfo	Linear & Point	OLR,GML,INSP	Daily
Finland	FTA	Q3/2016	Pilot	Full country	All roads	SL	Linear	OLR,GML,INSP	Pilot (batch)
Flanders	AWV/MOW	Q4/2016	Pilot	Full region	All roads	SL/TrafRestrictions	Linear & Point	OpenLR, GML	Pilot (batch)
France	IGN	Q1/2017	Pilot	Regional	All roads	FRC/FOW/LaneInfo /DrTF/AccessInfo	Linear	GML	Pilot (daily production, daily or weekly delivery as requested)
UK	DfT	Q2/2017	Pilot	Regional	All roads + TenT	To be defined	Linear	TBD	TBD
Ireland	DTTaS/NIUM	Q1/2017	Pilot	County(ies)	All roads + TenT	FRC/FOW/SL/LaneInfo	Linear	OpenLR, GML	TBD

# Recent results of WGs/Task Forces

- Fact Sheet on Location Referencing Methods
- Implementation Guidance Support documentation
- Position Document on TN-ITS data licenses

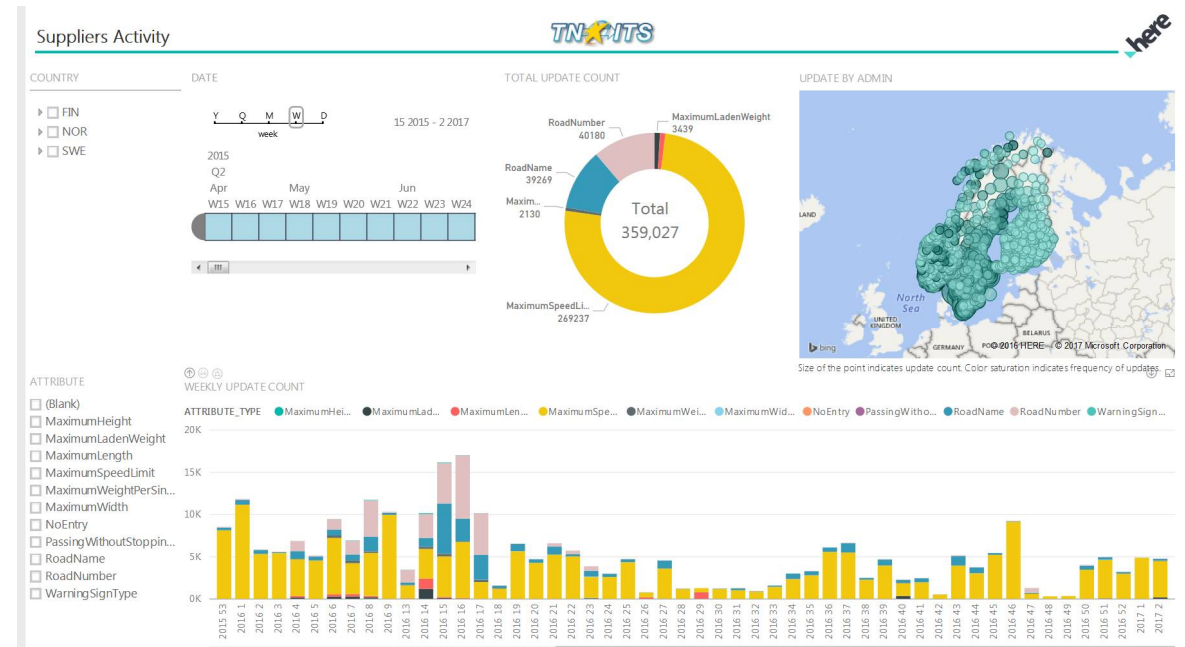
# Recent activities

- Task force on Service Level Agreements (SLA)
- Interact with CEN TC278 WG7 Specification team
- Actively reaching out to more road authorities in EU

# Situation today at HERE - TomTom



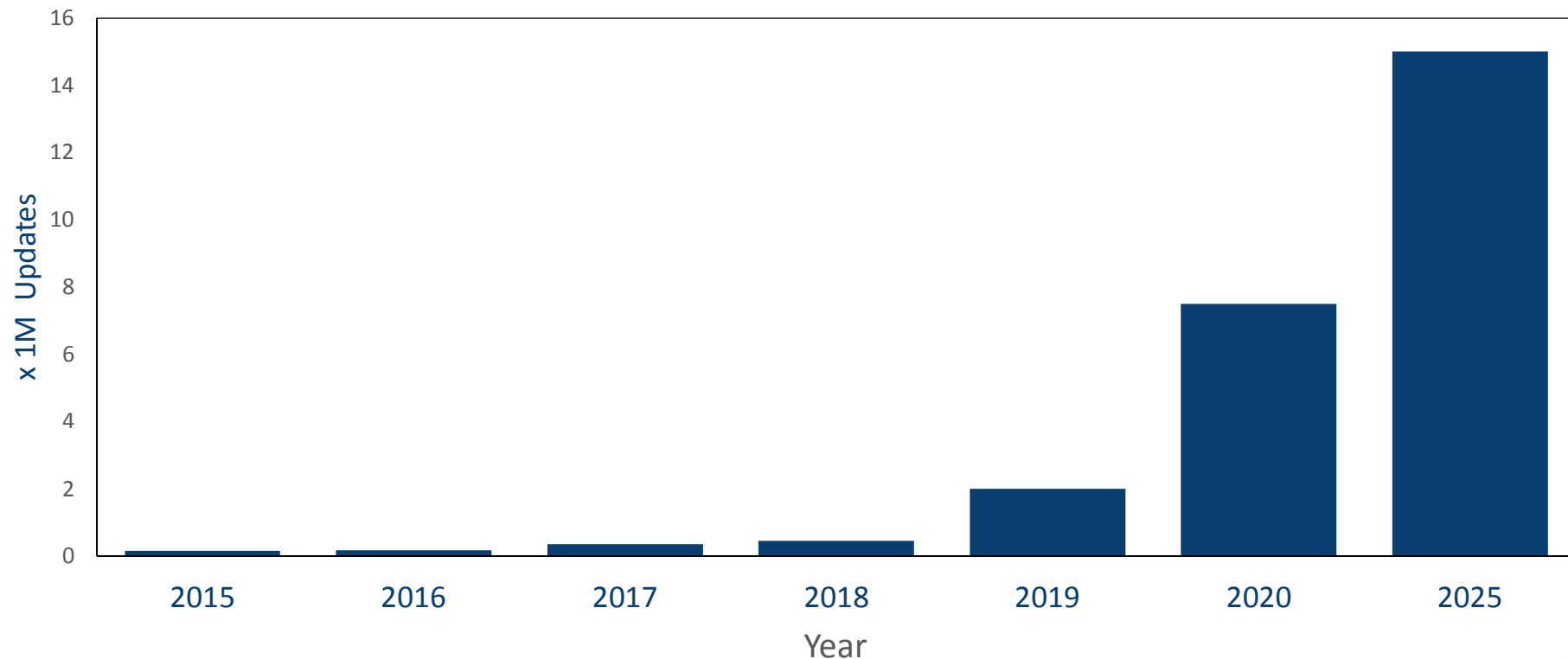
**TomTom** 



**here** 

# Potential Growth TN-ITS Exchange Data

Possible Number of TN-ITS Speed Limit Changes per Year in EU



# Learn more & get in touch

---

[www.tn-its.eu](http://www.tn-its.eu)

[info@tn-its.eu](mailto:info@tn-its.eu)

