



TN-ITS implementation in Flanders

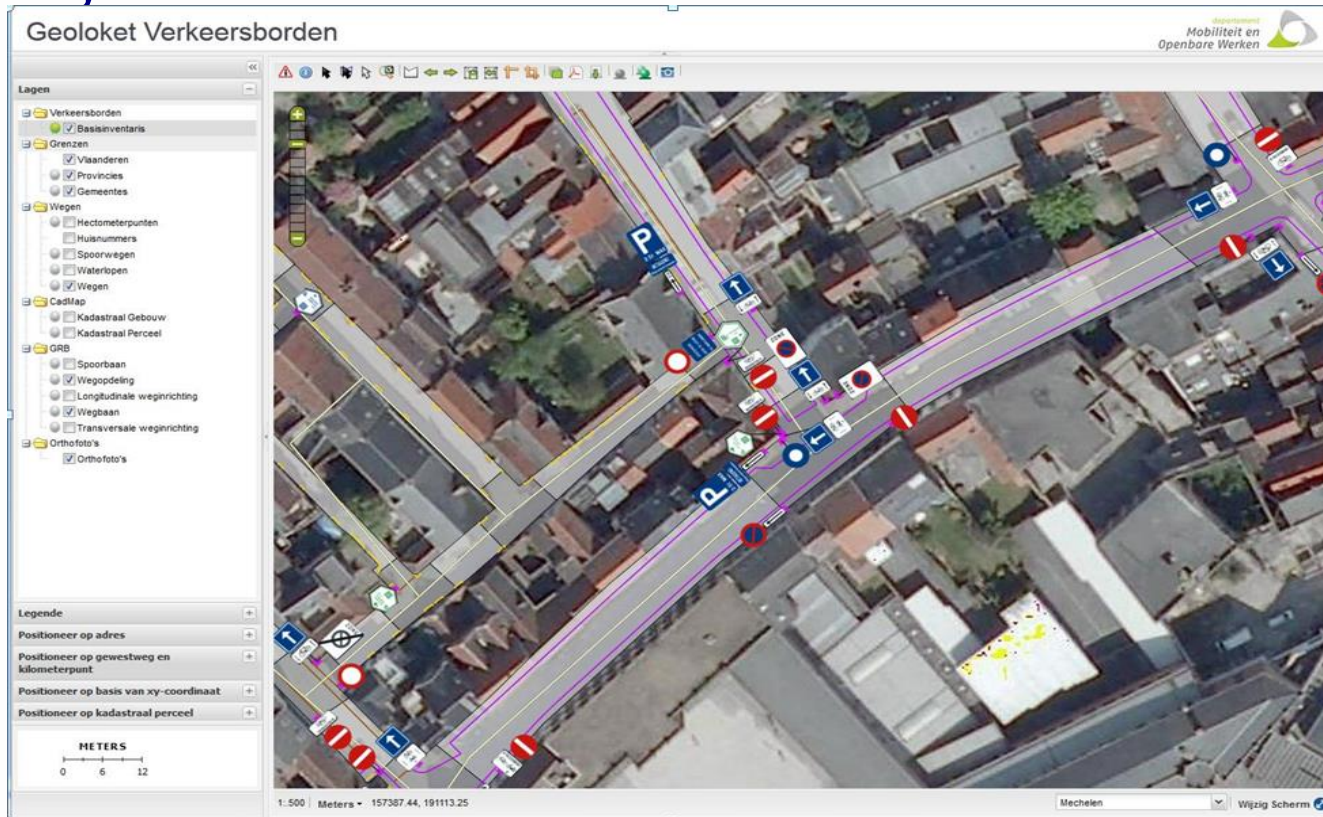
TN-ITS workshop 19/01/2017
ERTICO - Brussels



Source of image: ROSATTE web site (ertico.com/rosatte/)

Traffic Sign Database Flanders (1)

- TN-ITS implementation is based upon the Traffic Sign Database of the Agency for Roads and Traffic in Flanders



Traffic Sign Database Flanders (2)

- There are 2 traffic sign databases in Flanders:
 - The traffic sign database containing all traffic signs along the highways, main roads and regional roads in Flanders (about 6500km)
 - Managed by the Agency Roads and Traffic (AWV) of the Flemish government.
 - The traffic sign database containing all traffic signs along the other roads in Flanders, mainly local and secondary roads maintained by the cities and municipalities (about 54000km)

Traffic Sign Database Flanders (3)

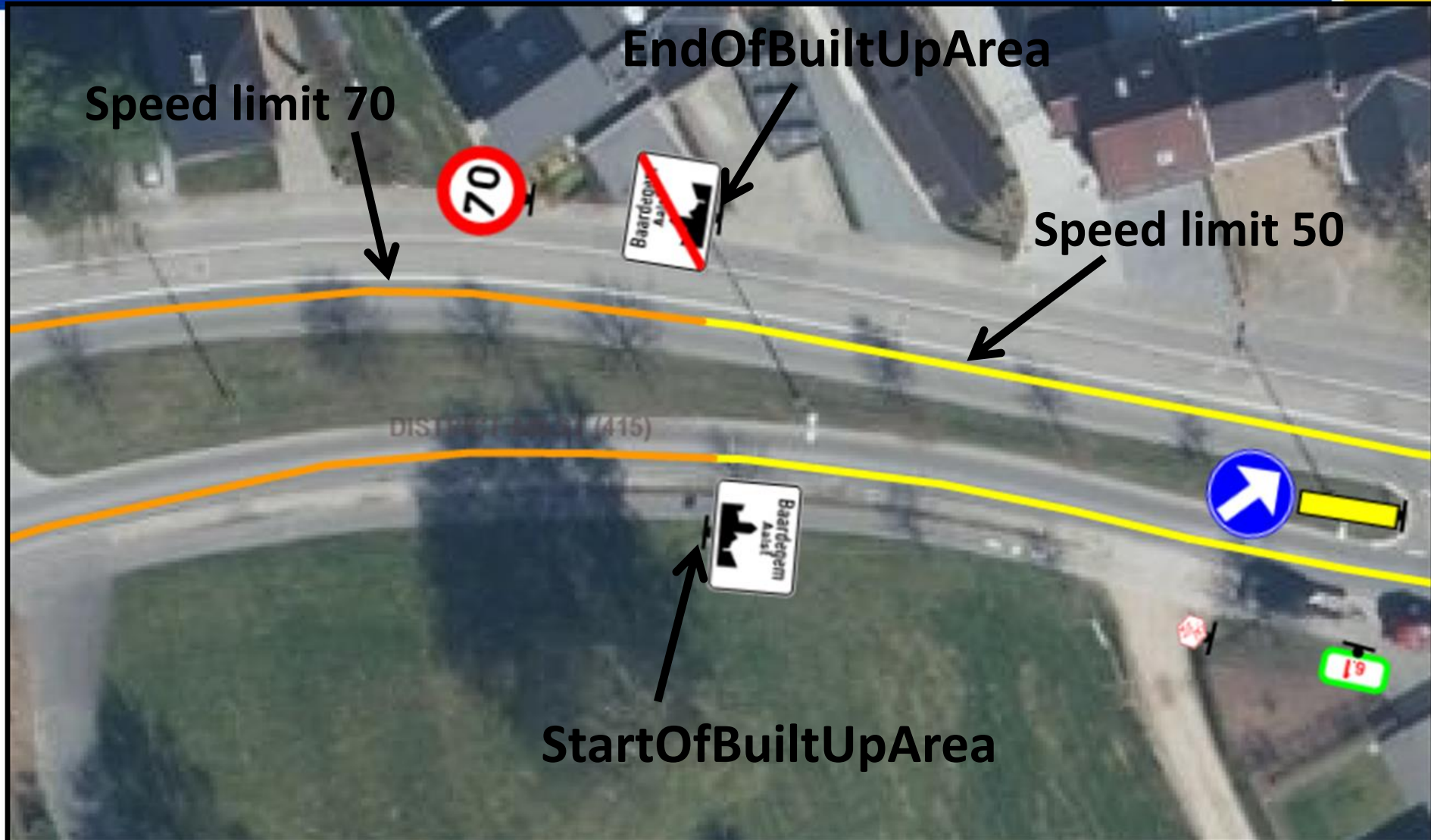
- 2007 - 2011
 - Inventory of highways, main roads and regional roads by the Agency for Roads and Traffic
- 2009 - 2010
 - Inventory of the other roads by the department of Mobility and Public Works

Using Mobile Mapping technology

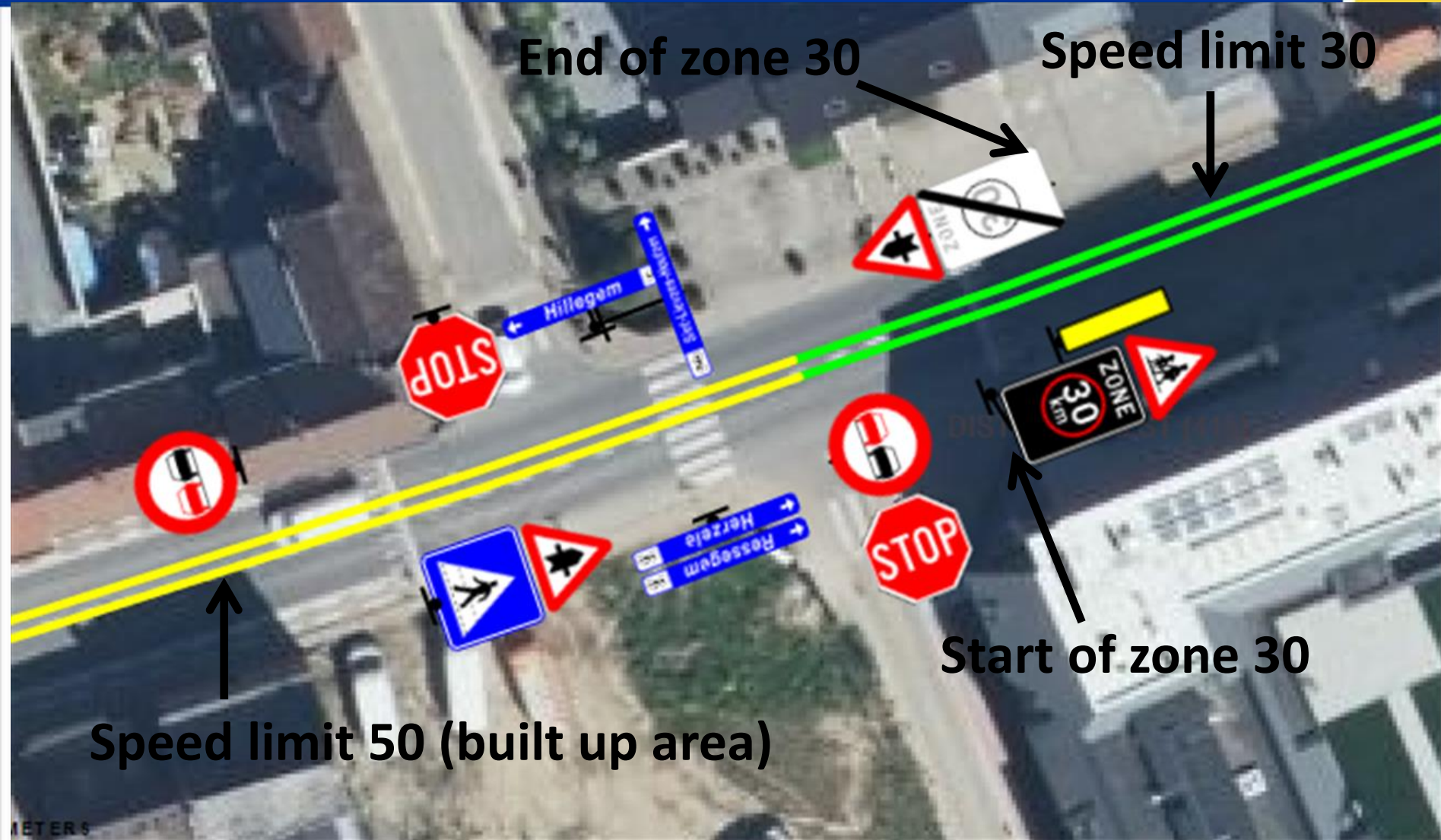
TN-ITS implementation - status

1. Kick-off meeting technical implementation team on 19/05/2016
2. First public TN-ITS webservice available: 29/09/2016
 - StartOfSpeedLimit, the EndOfSpeedLimit, the StartOfBuiltUpArea and the EndOfBuiltUpArea (point features, traffic signs)
3. Speed limits as line features published on 30/12/2016;
 - Automatically generated using the traffic sign database and ‘Wegenregister’ (Road Database Flanders - open data since juni 2016)
 - Testing by TomTom and Here

TN-ITS implementation - example



TN-ITS implementation - example



TN-ITS implementation - challenges (1)

- How to how to tell direction in which a traffic sign applies?
 - Not possible to embed this in the Rosatte format.
 - Not easy for map makers to process these data.
 - Extract linear speed limits starting from traffic signs;
 - Quality check is very important.
 - Quality depends on:
 - the traffic sign (up-to-date, correct road number, direction)
 - road database (Wegenregister)
 - algorithm.
- Work in progress

TN-ITS implementation - challenges (2)

- Keeping the databases up-to-date by road authorities;
 - There is no legal obligation for the road authorities to keep the traffic sign database up-to-date.
 - New project started in 2017 to merge both traffic sign databases into 1 database and to provide a new system (UI and services) to cities and municipalities for the updating of the traffic sign database.
 - Deployment and support of cities and municipalities at this moment out of scope, will be sorted out in 2017.

Thanks for your attention!

Bert Boterbergh,
Agency for Roads and Traffic, Flanders, Belgium
bert.boterbergh@mow.vlaanderen.be

