



## EU-EIP-4.7

### *Developments in France*

TN-ITS General Assembly and Session PR04 EU EIP Sub-Activity 4.7  
8 June 2016 - ITS European Congress, Glasgow



Source of image: ROSATTE web site ([ertico.com/rosatte/](http://ertico.com/rosatte/))



Co-financed by the European Union  
Trans-European Transport Network (TEN-T)

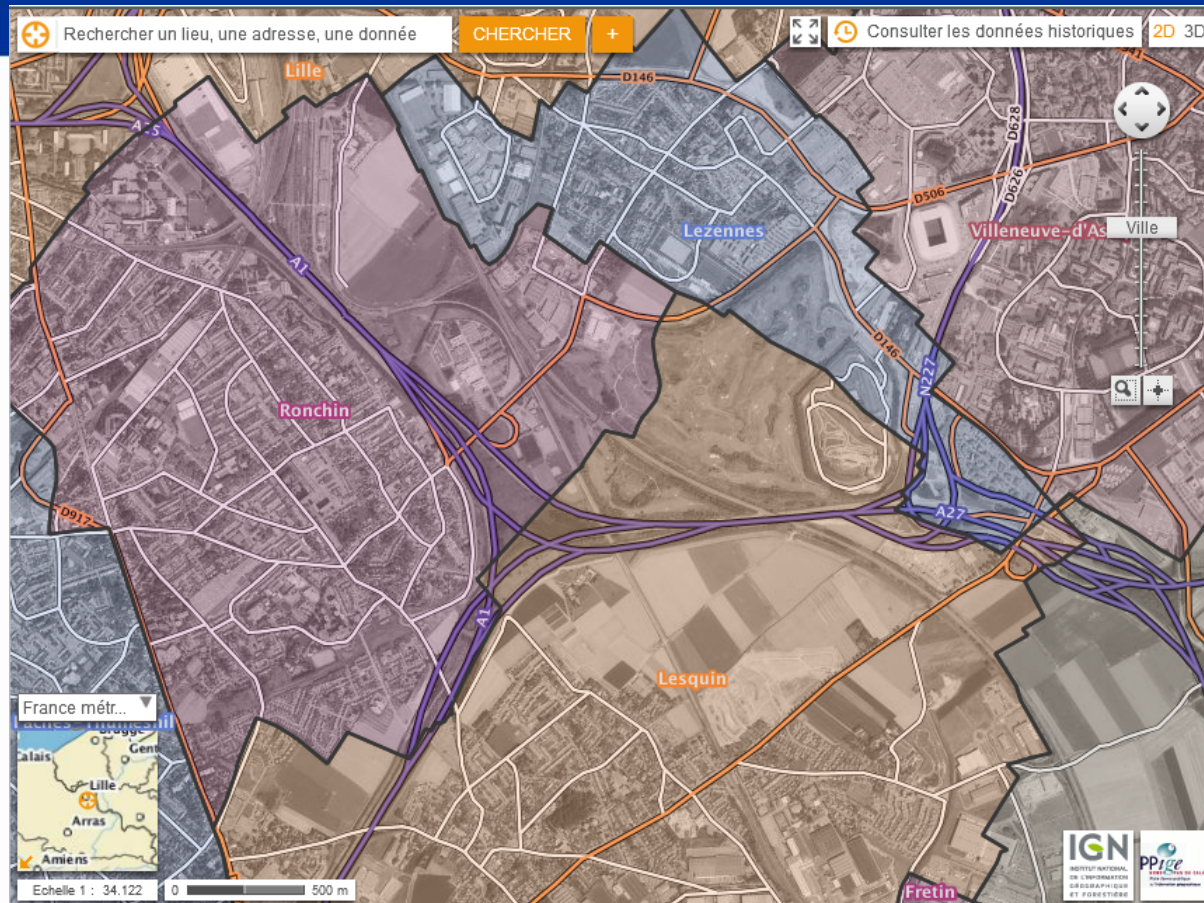
**Alain Chaumet**



# French road network

- National network
- « Départemental » network
- Local network (36 000 municipalities)
- Responsibilities of the public authorities for
  - maintenance of the infrastructure
  - Regulation (legal texts and traffic signs)
- Controls of the national police (ministry of interior) on the national and departmental networks and in the big cities

# Near Lille



**Source Géoportail, IGN and PPIGE data**

*Example of juxtaposition of responsibilities close to Lille (municipalities of Lezennes, Villeneuve d'Asq, Sainghin-en-Melantois, Lesquin and Ranchin)*

- DataBase of the national network for maintenance by the « ministry of transports »
- DB of the national and departmental networks with speed limits and PK-PR
- DB of local authorities (« Départements », « régions », « agglomérations »,...)
- DB of IGN (RGE and BDUni for the vectorial component)

# Road data services

- INSPIRE services in the context
- Enhancements in progress of the IGN BDUni
- Testing of the provision of daily updates



- Translation from IGN model to ITS (INSPIRE, Rosatte ?) model, taking in account the future information of BDUni to be included,
- Inclusion of the future information sources (traffic signs, POI, ...) in the architecture of the French EIP service,
- Tests, feedbacks and enhancements

# Agenda

- 2016 July : developper expected to join the team (1,5 person)
- July to December : developments and specification
- 2017 January to March : tests and feedbacks
- April to June : documentation

# Conclusion

- In 2016
  - semestrial updates
  - Poor or heterogeneous road data
- In 2017
  - Daily updates
  - enhanced and standardized online road data